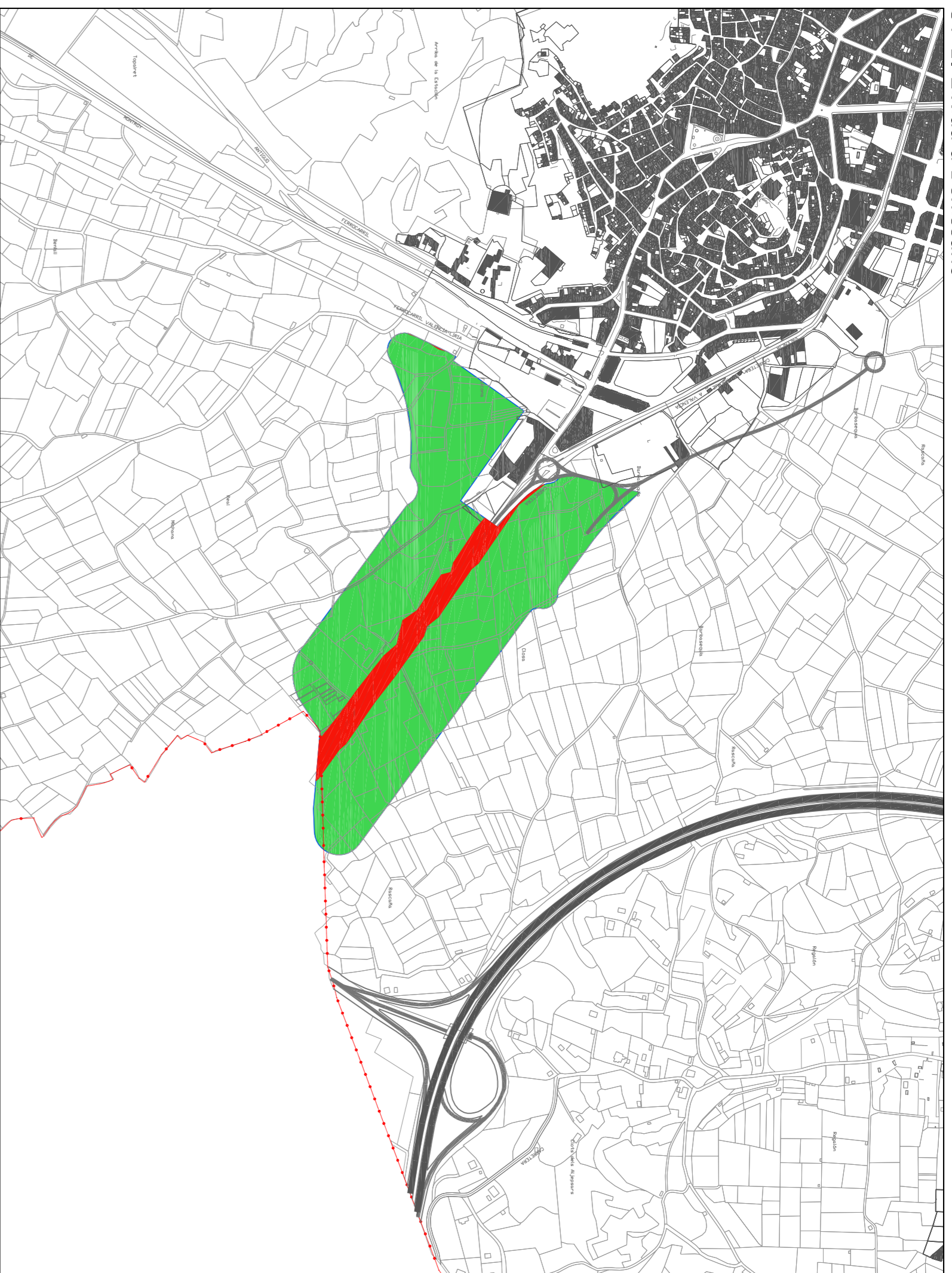
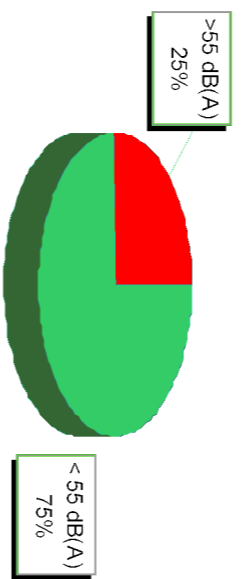


ST-1. Eixida a Benissanó



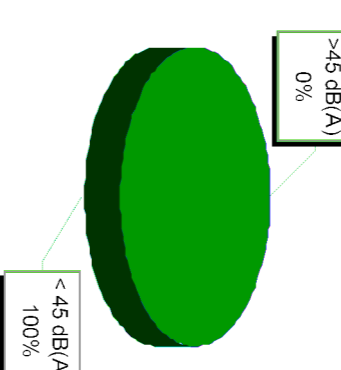
ST-1. Eixida a Benissanó



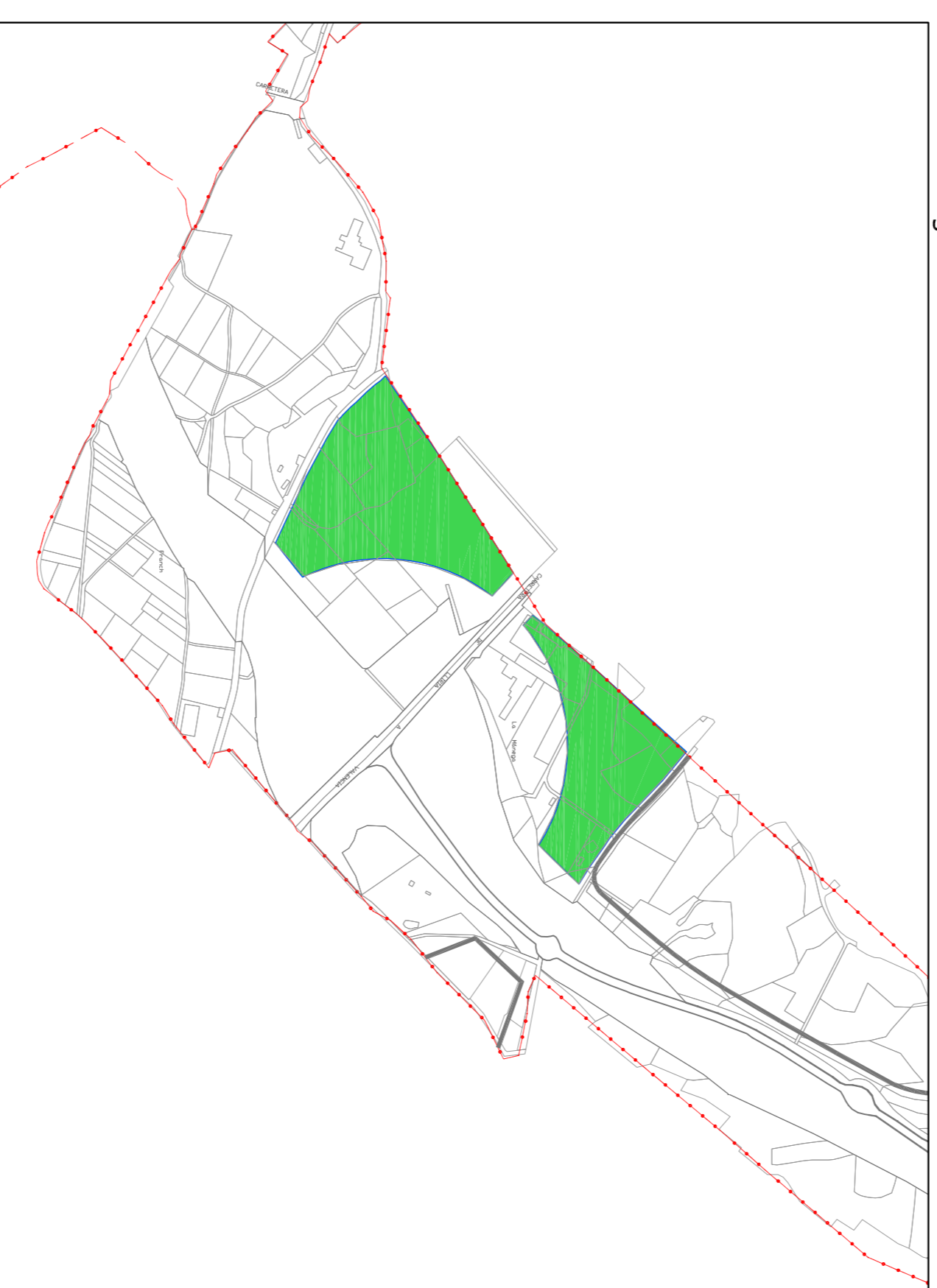
ST-4. La Salle



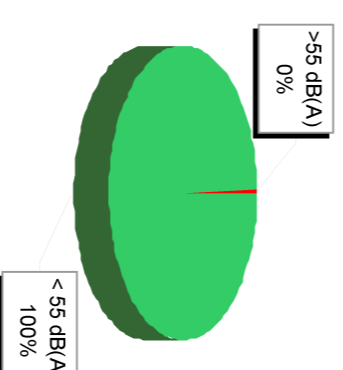
ST-4. La Salle



ST-2. La Manega



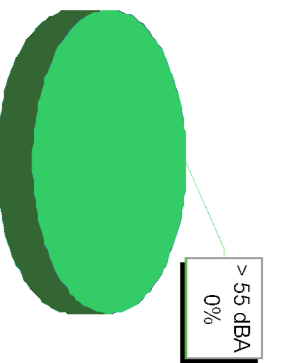
ST-2. La Manega



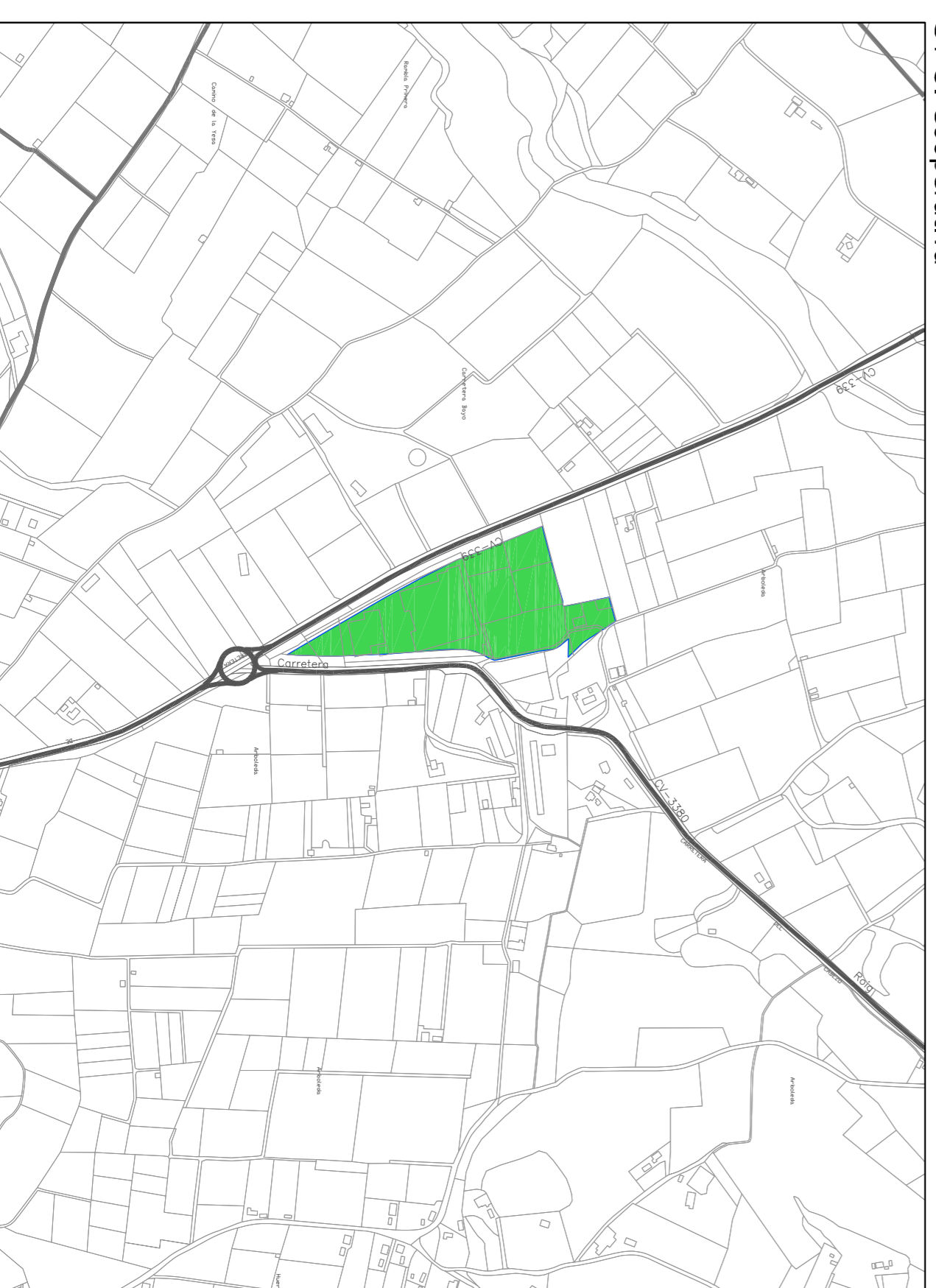
CENTRO CIVICO "EL PRAT"



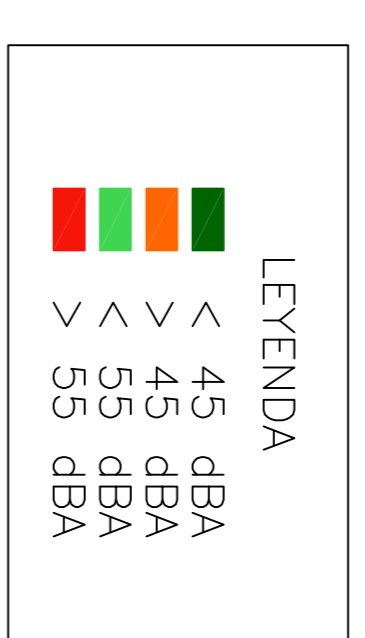
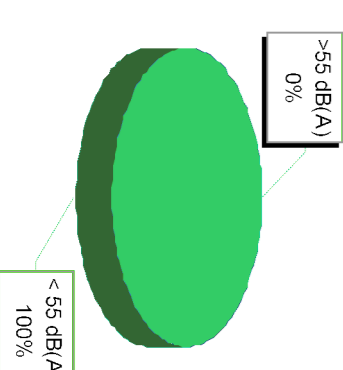
Centro Civico El Prat



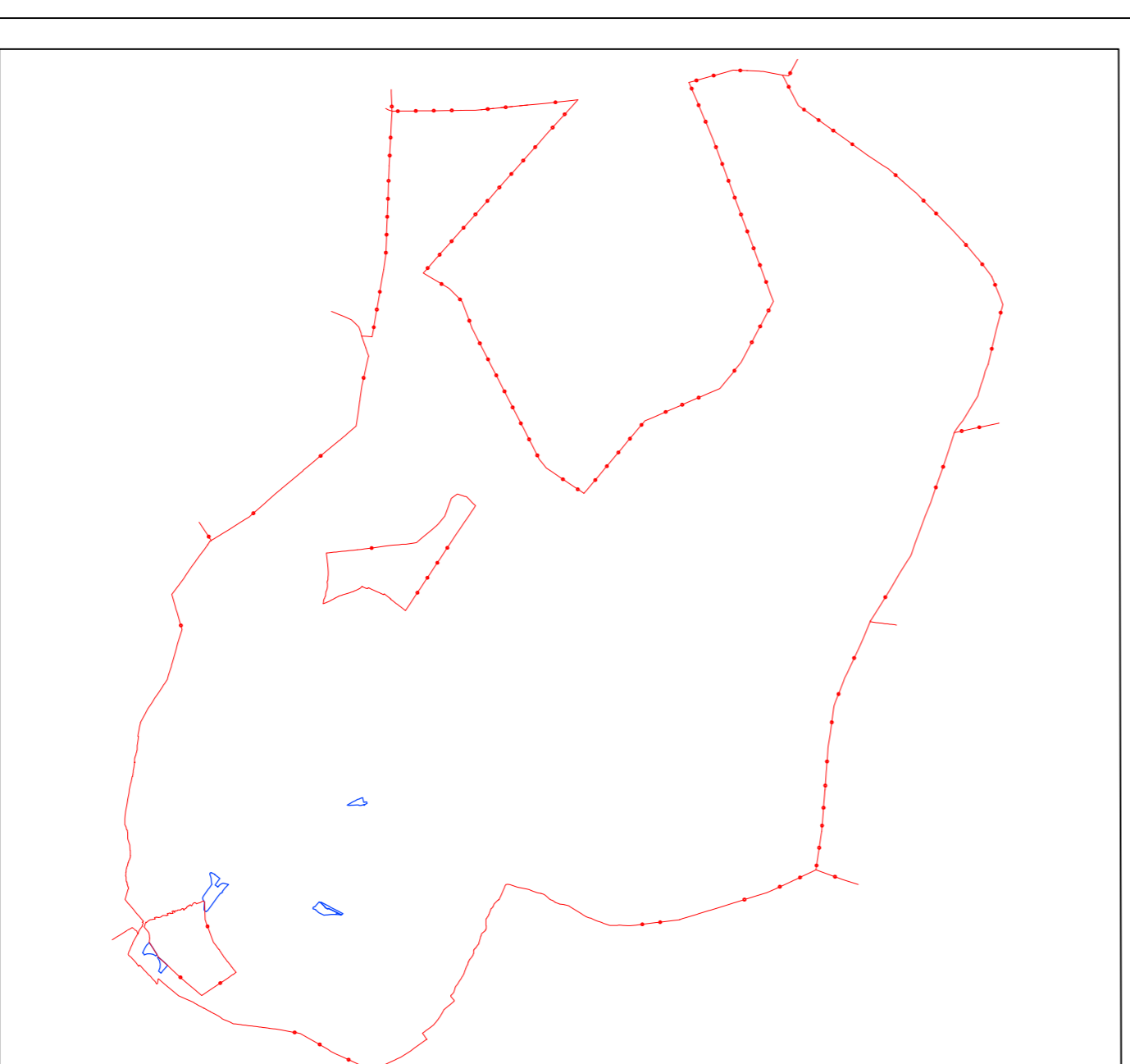
ST-3. Cooperativa



ST-3. Cooperativa



LIMITE TÉRMINO MUNICIPAL



### PLAN ACUSTICO MUNICIPAL DE LIRIA (VALENCIA)

PLANO Nº: 15.2  
 DESIGNACION: MAPA DE CONFLICTO. USO TERCARIO PERIODO NOCTURNO

FECHA: ENERO 2009  
 ESCALA: 1:7.500  
 ESCALA GRAFICA: 0 100 200 300 m.

REALIZADO POR: CAZ  
 INGENIERO INDUSTRIAL LORETO COSTA. C.O.I. Nº 4680  
 REVISADO POR: INGENIERO CAMINOS LUIS CASTEL. C.O.I. Nº 2726

CAZ INVERSIONES Y ESTUDIOS  
 C/CIOSAR Nº46-3º-46805 VALENCIA  
 TEL. 963791208 FAX. 963791236  
 email: administracion@cazinvest.com  
 http://www.cazinvest.com